

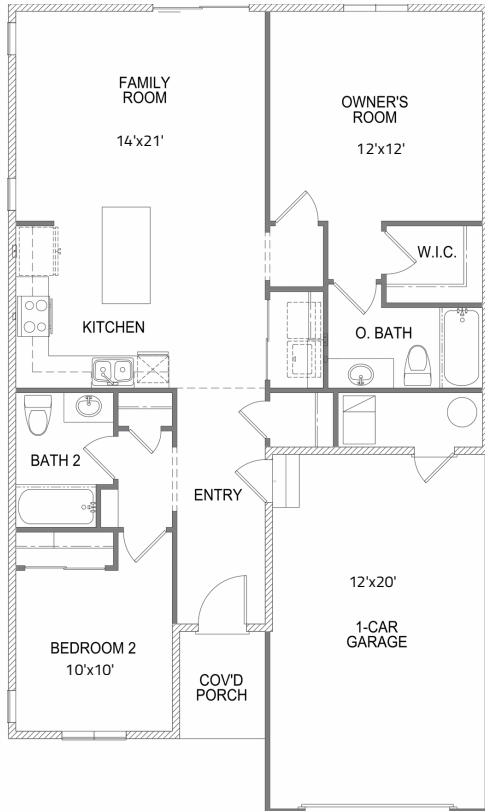
unique features:

- Charming front porch
- Connected living, dining & kitchen
- Luxury primary suite w/ walk-in closet
- Upstairs loft with large storage closet
- Laundry/Mudroom off the garage
- Coat closet near entry and garage
- Footprint: 28' wide x 52' deep

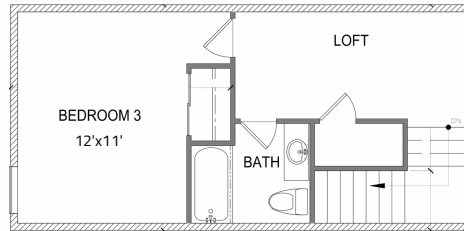
example customizations:

- Basement with room for 2 additional bedrooms, 1 bath, and a family room
- Full-glass French door w/ internal blinds in lieu of sliding patio door

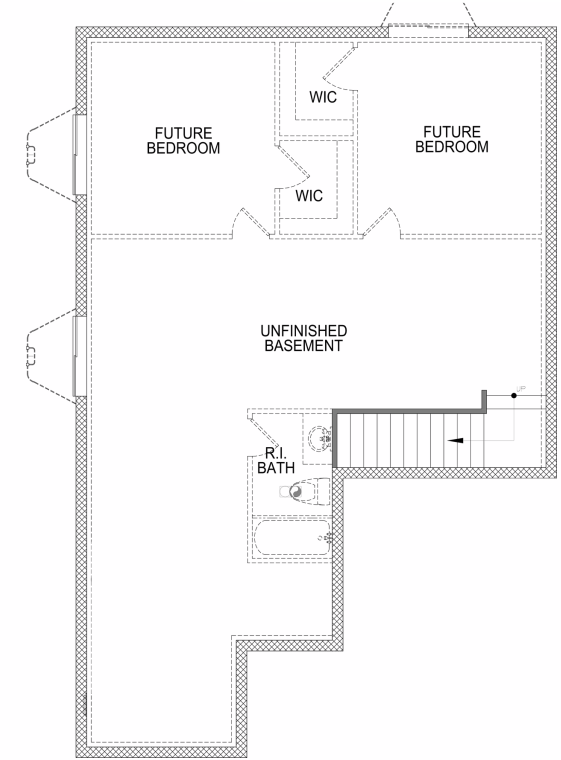
main floor



optional second floor



optional basement



interactive floorplan coming soon

customize this floorplan

